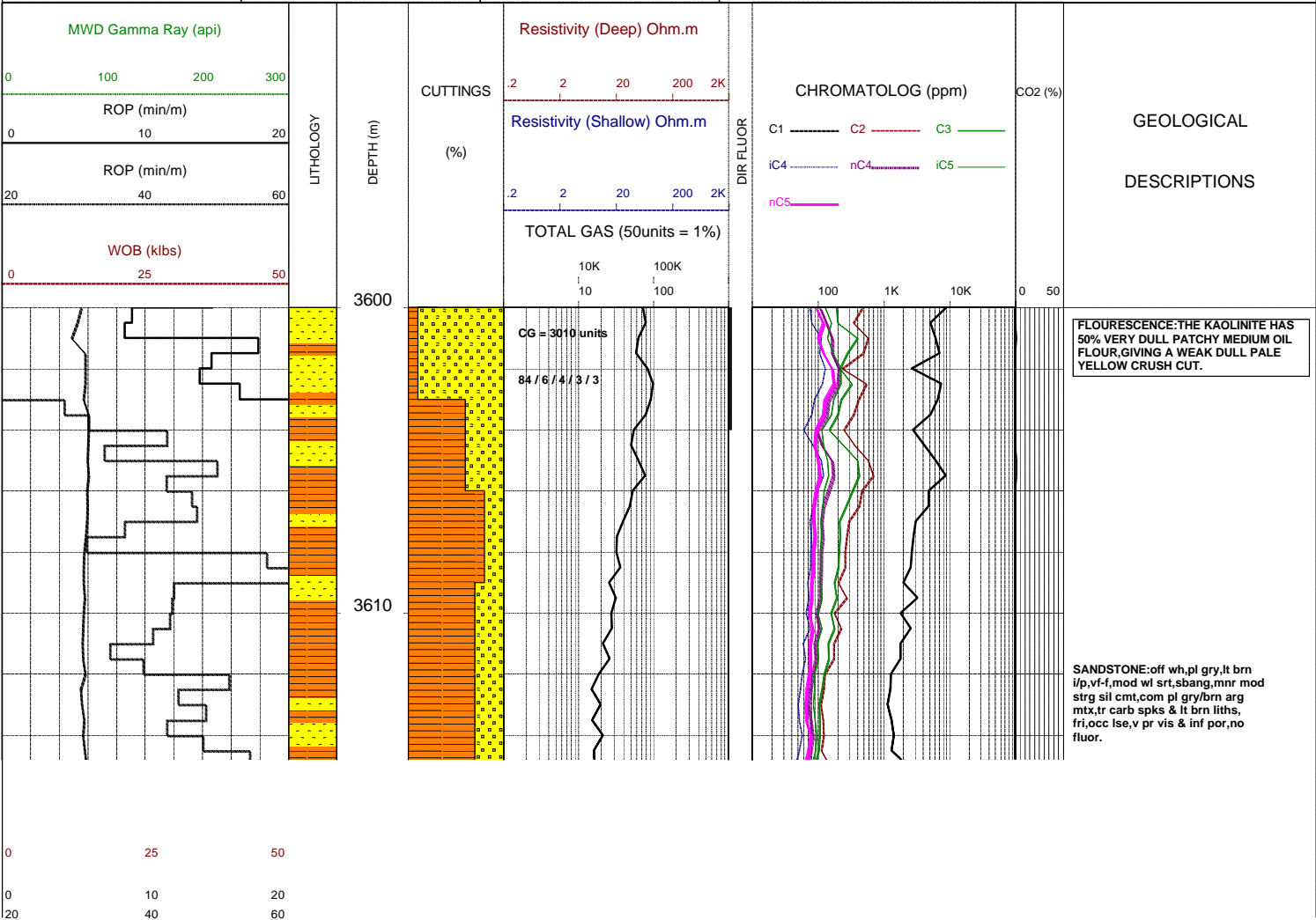
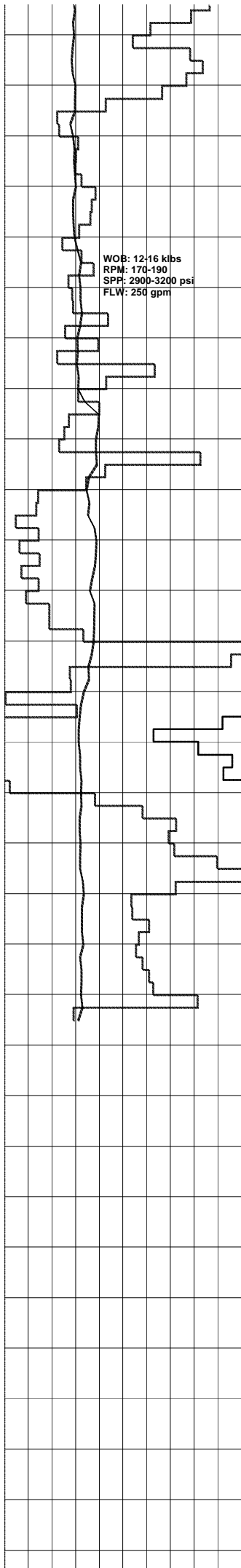


# GLENAIRE 1 ST1

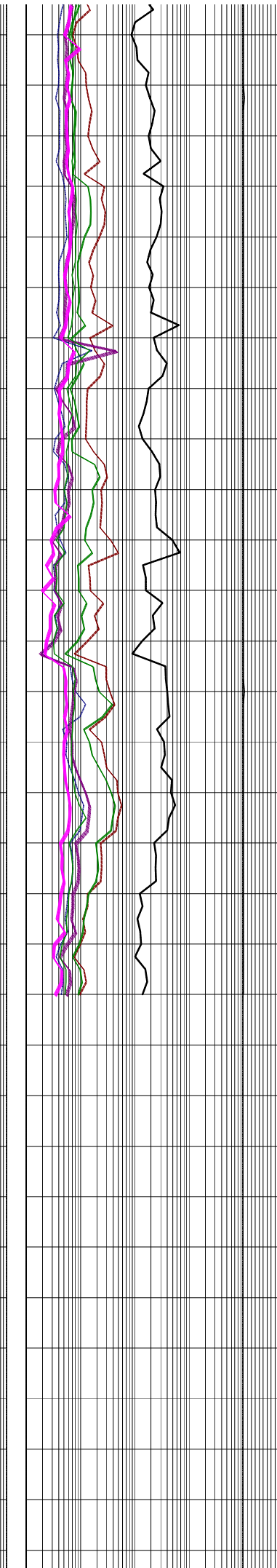
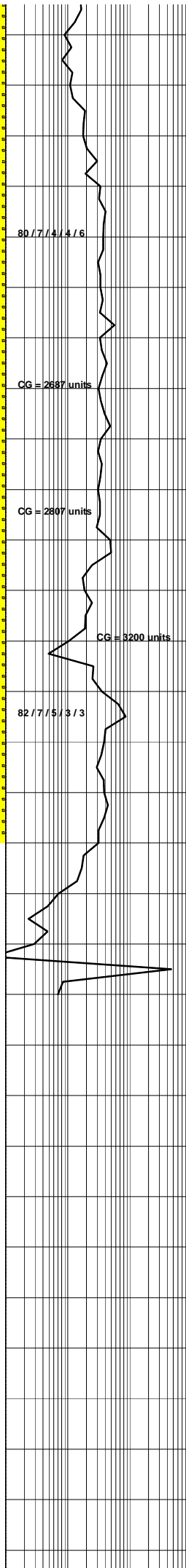
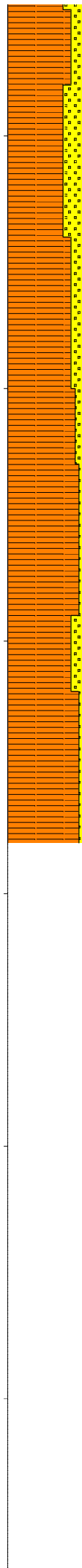
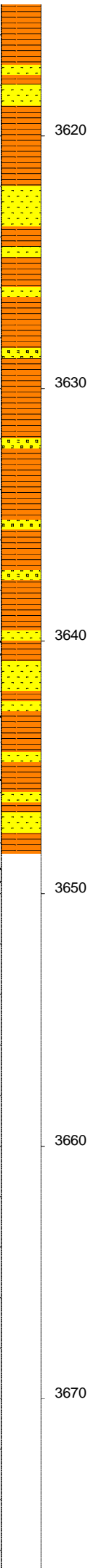
Field : aaa	Kelly Bushing : PEP 160	Rig : ENSIGN 32	Open Hole:	Cased Hole:	Loggers : J.SUTTON
Block: bbb	Ground Level : STATUS	Spud Date : 08/09/2006	17.5" (12.25") 307m	13.375" (9.625") 303.5m	N.LUIS
State : VICTORIA	GRS80 Ellipsoid MGA94 Zone54 :	TD Date : XX/XX/2006	12.25" (8.5") 1255m	9.625" (7.0") 1252m	J.TRETHEWEY
Country : AUSTRALIA	Lat. : 37°34'47.03S	Total Depth : jjj	8.5" 3006m	7.0" 2999m	bbb
Scale : 1/ 200	Long. : 140°59'52.25E	Final Status : kkk	6.0" eee	hhhh iii	ccc

<b>LITHOLOGY</b> Conglomerate Coarse Sandstone Med Sandstone Calcareous Sst Silty Sandstone Siltstone Carb. Siltstone Calc. Siltstone Clay Limestone Dolomite Coal Anhydrite Gypsum Igneous Volcanic Metamorphic Cement	<b>ACCESSORIES</b> Pyrite Siderite Glauconite Feldspar Mica Ferrous Chert Calcareous Dolomitic Carbonaceous Lithoclast Breccia Foraminifera Corals Inoceramus Bryozoa Plant remains Fossils	<b>DRILLING DATA</b> Casing Shoe Bit Trip Wiper Trip Core DST Deviation Survey  <b>MUD DATA</b> MW - Mud Weight (lb/gal) FV - Funnel Viscosity (s/qt) PV - Plastic Viscosity (cps) YP - Yield Point (lb/100ftsq) Gel - Gel Strength (10sec) WL - Water Loss (cc/30min) pH - Acidity / Alkalinity Ck - Cake (32nd/inch) O/W/S - Oil / Water / Solids Cl - Chlorides (mg/L) K+ - Potassium (mg/L) Rmf - Res. Mud Filtrate (ohmm)	<b>ABBREVIATIONS</b> BOPD - Barrels of Oil Per Day BWPD - Barrels of Water Per Day CG - Connection Gas CO - Circulate Out COND - Condensate c/c - Crush Cut DST - Drill Stem Test FLOW - Flow Rate (gal/min) GCM - Gas Cut Mud GCW - Gas Cut Water GTS - Gas To Surface INJ - Injection of Mist (bbls/hr) LCM - Lost Circulation Material MMCFD - Million Cubic Feet / Day NGTS - No Gas To Surface NOTS - No Oil To Surface NFTS - No Flow To Surface OCM - Oil Cut Mud OG - Over Gauge OH - Open Hole OTS - Oil To Surface Q - Flow Rate REC - Recovery FLUOR - Fluorescence ROP - Rate Of Penetration RPM - Revolutions Per Minute RTSTM - Rate Too Small To Measure Rw - Resistivity water r/r - Ring Residue SCFM - Standard Cubic Ft/Min (air) SGCM - Slightly Gas Cut Mud SPM - Strokes Per Minute SPP - Stand Pipe Pressure SWC - Side-Wall Core TG - Trip Gas WOB - Weight On Bit
---	---	--	--





WOB: 12-16 klbs  
 RPM: 170-190  
 SPP: 2900-3200 psi  
 FLW: 250 gpm



SILTY CLAYSTONE: med-dk brn/gry, mnr dk gry, aren i/p, occ micmic, mnr carb spks, tr off wh liths, mod hd-hd, sbblky.

SANDSTONE: med dk gry, dk gy, tr pl gry, lt gy, vf-crs grs, pr srt, sbang -sbrnd, arg mtz, tr sil calc cmt, tr carb spks, tr liths, tr micmic, pr vis & inf por, no fluor.

SILTY CLAYSTONE: dk-v dk gry, dk gry/brn, occ med brn, aren i/p, mnr micmic, occ-com carb incl, tr off wh liths, frm-mod hd, occ hd-v hd, sbblky-sbflss.



